

Cypress

A sustainable resource – durable, distinctive, decorative



Cypress is the common trading name used to identify White Cypress Pine, *Callitris glaucophylla*. There are a number of other Cypress species that are native to Australia but none are commercially harvested.

Although botanically a softwood (conifer) its properties relate more closely to those of medium density hardwoods and it has for many years been used in similar applications such as flooring, decking, weatherboards, framing and fencing timbers.

The largest areas of forest containing Cypress are found throughout western New South Wales and Southern Queensland. In NSW over 90% of the Cypress harvested for timber production comes from government owned and managed State Forests.

In NSW all of these State Forests have been sustainably managed for many years and have recently been independently certified as compliant with the Australian Forestry Standard AS 4708 (AFS).

Cypress NSW

In 2003 the NSW Cypress Industry Saw-millers formed an alliance to re-organise their production capabilities, improve work practices, upgrade the processing facilities and provide a guarantee of the quality of Cypress timber products.

Products that carry the “Cypress NSW” logo guarantee the specifier or consumer that the Cypress to be used is sustainably harvested and covered by a manufacturer’s quality assurance program.

The “Cypress NSW” logo is only attached to timber that is produced from logs supplied by Forests NSW (the government agency that manages the State Forests) and is manufactured under the strict guidelines laid down by the

Australian Timber Industry

Certification (ATIC) Quality

Assurance program that is in

place in the NSW

Cypress industry.



Appearance

Cypress is a very distinctive timber and is easily recognised by its variegated colour range and the occurrence of knots, a characteristic that provides a remarkably decorative figure on planed surfaces. The colour ranges from light cream or fawn through to dark chocolate and can vary dramatically with differences in sawing techniques.

Characteristics

Cypress is one of the world’s most unique softwoods, not only is it much harder than most other commercial softwood building timbers, such as plantation pines and Oregon, it is also very durable and naturally resistant to termites. The wood has a distinctive odour, most notable when freshly sawn or planed; this odour is attributed to a natural resin which is an effective termite repellent.

The heartwood of Cypress is ranked as termite-resistant and is included in a list of termite resistant timbers provided in AS 3660.1 (Termite management). Cypress is also rated durability Class 1 for above-ground exposed applications and durability Class 2 for in-ground use (AS 5604 Timber Natural durability ratings). Along with natural durability Cypress is also recognised for its hard wearing ability which has made it a very popular flooring timber.

Available Products

Cypress products are widely available in NSW; however only flooring and structural grades are produced under the “Cypress NSW” double certification program which guarantees AFS sustainable harvesting and the ATIC Quality Assurance processing.

Flooring

Tongue and groove Cypress flooring is generally supplied in nominal widths of 75mm, 100mm, 113mm and 150mm (actual cover widths of boards will be less and will vary depending on the profile type) with a nominal thickness of 25 mm



and is reasonably available from timber merchants and flooring suppliers in the Greater Metropolitan areas of Sydney, Newcastle, Wollongong and the ACT as well as the saw-millers/merchants in the western areas of the State.

Flooring marketed as “Cypress NSW” is fully kiln dried and accurately machined to profile in accordance with the requirements of the Australian Standard and is then subjected to the rigorous monitoring requirements of the ATIC quality assurance program. This program guarantees the consumer the best cypress flooring product available in Australia.

As an extra to flooring, some sizes are produced with a “V” joint on the reverse. This allows the product to be used as flooring and at the same time provide an attractive exposed underfloor such as in a basement or garage ceiling where both the floor above is a walking surface and the ceiling below is visible. Such boards can also be used as a lining (wall or ceiling) in their own right.

Structural

Cypress as a domestic and rural framing timber is well known in the western districts of NSW. In many areas of NSW it is the preferred sub-floor framing material (bearers and joists), particularly where termites or durability are considered a risk.

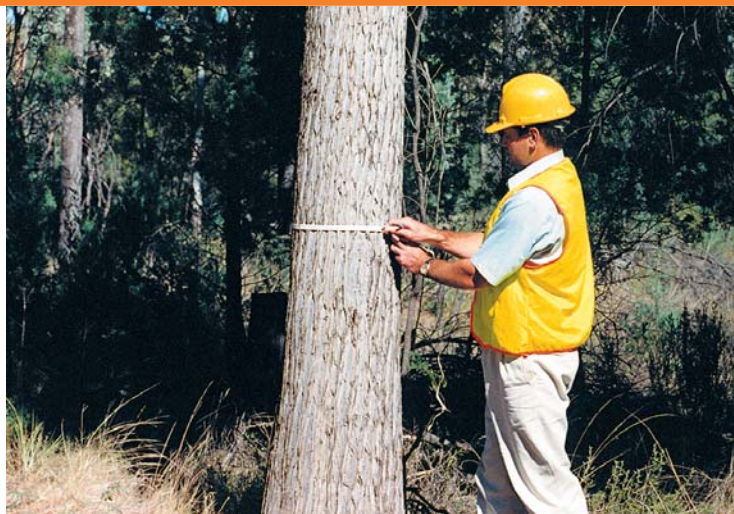
A full range of unseasoned building sizes in grades F5 and F7 is available although stock in the Greater Metropolitan areas may be limited with full job lots available for supply against order. Span tables for unseasoned Cypress are included in the Australian Standard, Residential timber-framed construction AS 1684 – 2006 as supplements 10 & 11.

Framing sizes are also readily available for frame and truss applications and can be supplied in bulk or in job lots to the manufacturer.

Many specifiers and consumers are concerned about the risk of termite attack and do not want to use timber that has been chemically treated. In these circumstances naturally termite resistant Cypress is an ideal and logical alternative. Cypress framing is used very successfully in all high risk termite areas of NSW and can provide positive protection to the framework of a building without the need for chemical impregnation.

Other Products

The NSW Cypress saw-millers produce a range of other products that are not covered under the “Cypress NSW” program. All of these products are still manufactured from logs obtained from



sustainably managed forests, the AFS certified resources of Forests NSW; however they are not subjected to the requirements of the ATIC process.

These products include weatherboards (exterior cladding), decking, panelling (interior linings), skirting and architraves, landscaping and fencing.

Weatherboards are widely used and regularly available in the Greater Metropolitan areas with profiles such as rusticated, (single) log cabin, double log cabin, splayed and chamfer board processed in various widths.

Chain of Custody

Chain of Custody should be available from producers who manufacture “Cypress NSW” products; however many timber merchants do not have the “seller” link readily available, for all inquiries regarding the supply of Chain of Custody certified Cypress please contact Cypress NSW by email on info@cypressnsw.com so that the appropriate arrangements for supply can be organised where necessary.

Further Information

If more details are required on the certification or processing applications please contact the following:

- AFS Certification / Forests NSW Certification
Officer Tel: 02 9872 0519
or email: ems@sf.nsw.gov.au
- Quality Assurance / Australian Timber Industry Certification Tel: 03 9611 9088
or www.timbercert.com.au
- www.cypressnsw.com

For any additional assistance contact
Timber Development Association (NSW) Ltd
www.timber.net.au

Cypress NSW
www.cypressnsw.com

